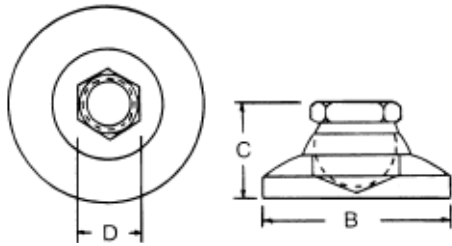


Leveling Mounts

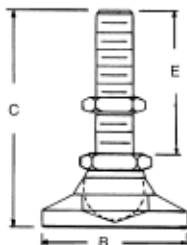


- 10 degree swivel in all directions to keep machine tools, racks, assembly lines, and other equipment level.
- Available in steel or stainless steel
- Do not exceed load requirements
- Hardened ball insures proper seating

		INCH					Load Pounds
Steel PART #	Stainless Steel PART #	Thread X	B	C	D		
LM-100	LM-100SS	#10-32	3/4	17/32	3/8	700	
LM-101	LM-101SS	1/4-20	1	45/64	1/2	1000	
LM-1015	LM-1015SS	5/16-18	1-1/4	7/8	5/8	2500	
LM-102	LM-102SS	3/8-16	1-1/4	7/8	5/8	3750	
LM-103	LM-103SS	1/2-13	1-7/8	1-1/8	3/4	5000	
LM-104	LM-104SS	5/8-11	2-1/2	1-1/4	7/8	6000	
LM-105	LM-105SS	3/4-10	3	1-1/2	1-1/16	7400	
LM-1055	LM-1055SS	7/8-9	4	1-7/8	1-3/8	15000	
LM-106	LM-106SS	1-8	4	1-7/8	1-3/8	20000	
LM-107	LM-107SS	1-1/4-7	6	2-3/4	1-7/8	43000	

		METRIC					Load Kilos
Steel PART #	Stainless Steel PART #	Thread X	B	C	D		
LM-200	LM-200SS	M6 x 1.0	19mm	14mm	10mm	310	
LM-201	LM-201SS	M8 x 1.25	26	18	13	450	
LM-202	LM-202SS	M10 x 1.5	32	22	16	1700	
LM-203	LM-203SS	M12 x 1.75	48	29	19	2250	
LM-204	LM-204SS	M16 x 2.0	64	32	22	2720	
LM-205	LM-205SS	M20 x 2.5	76	38	27	3350	
LM-206	LM-206SS	M24 x 3.0	101	48	35	9070	
LM-207	LM-207SS	M30 x 3.5	152	70	48	18700	

Leveling Mounts with Bolts



		INCH					Load Pounds
Steel PART #	Stainless Steel PART #	Thread X	E	B	C	D	
LM-300	LM-300SS	#10-32	1	3/4	1-17/32	3/8	700
LM-3005	LM-3005SS	#10-32	2	3/4	2-1/2	3/8	700
LM-301	LM-301SS	1/4-20	1-1/4	1	1-61/64	1/2	1000
LM-3015	LM-3015SS	1/4-20	2-1/2	1	3-3/16	1/2	1000
LM-3017	LM-3017SS	5/16-18	2	1-1/4	2-7/8	5/8	2500
LM-3018	LM-3018SS	5/16-18	4	1-1/4	4-7/8	5/8	2500
LM-302	LM-302SS	3/8-16	2	1-1/4	2-7/8	5/8	3750
LM-3025	LM-3025SS	3/8-16	4	1-1/4	4-7/8	5/8	3750
LM-303	LM-303SS	1/2-13	2	1-7/8	3-1/8	3/4	5000
LM-3035	LM-3035SS	1/2-13	4	1-7/8	5-1/8	3/4	5000
LM-304	LM-304SS	5/8-11	2	2-1/2	3-1/4	7/8	6000
LM-3045	LM-3045SS	5/8-11	4	2-1/2	5-1/4	7/8	6000
LM-305	LM-305SS	3/4-10	2	3	3-1/2	1-1/16	7400
LM-3055	LM-3055SS	3/4-10	4	3	5-1/2	1-1/16	7400
LM-3058	LM-3058SS	7/8-9	4	4	5-7/8	1-3/8	15000
LM-306	LM-306SS	1-8	3-1/2	4	5-3/8	1-3/8	20000
LM-307	LM-307SS	1-8	4-1/4	4	6-1/8	1-3/8	20000
LM-3075	LM-3075SS	1-8	6	4	7-7/8	1-3/8	20000
LM-308	LM-308SS	1-1/4-7	4	6	6-3/4	1-7/8	43000
LM-309	LM-309SS	1-1/4-7	6	6	8-3/4	1-7/8	43000

		METRIC					Load Kilos
Steel PART #	Stainless Steel PART #	Thread X	E	B	C		
LM-400	LM-400SS	M6 x 1.0	25mm	19mm	39mm	317	
LM-401	LM-401SS	M8 x 1.25	31	26	50	453	
LM-402	LM-402SS	M10 x 1.5	51	32	73	1701	
LM-403	LM-403SS	M12 x 1.75	51	48	79	2268	
LM-404	LM-404SS	M16 x 2.0	51	64	83	2721	
LM-405	LM-405SS	M20 x 2.5	51	76	89	3357	
LM-406	LM-406SS	M24 x 3.0	88	101	136	9072	
LM-407	LM-407SS	M24 x 3.0	108	101	149	9072	
LM-408	LM-408SS	M30 x 3.5	102	152	171	18730	
LM-409	LM-409SS	M30 x 3.5	152	152	222	18730	

- 10 degree swivel in all directions to keep machine tools, racks, assembly lines, and other equipment level
- Steel ball hardened for proper seating
- Jam nut included
- Available in inch and metric sizes
- Available in steel or stainless steel